

South Park Road Wimbledon, SW19 8ST

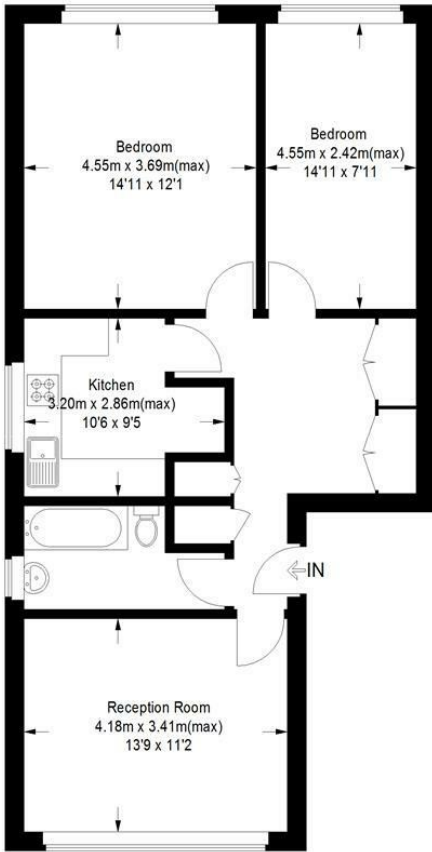
£450,000 Leasehold - Share of Freehold



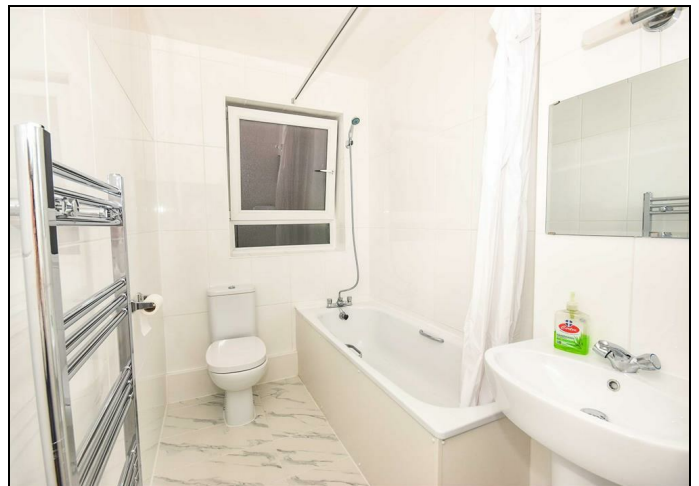
A two double bedroom, first floor, purpose built flat with no onward chain located a stone's throw away from Wimbledon town centre. This spacious flat as a bright reception room, separate kitchen and a modern family bathroom. This great flat has the added benefit of share of freehold making this an ideal first time purchase or investment.

South Park Road, SW19

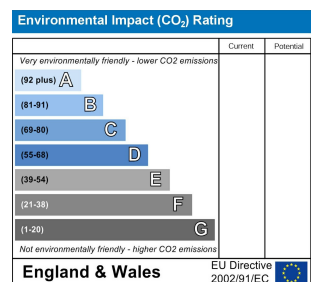
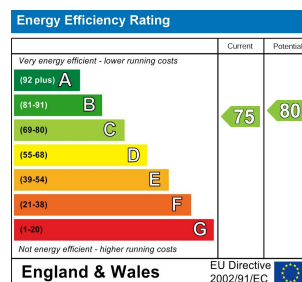
Approximate Gross Internal Area
69.7 sq m / 750 sq ft



This floor plan is for representation purposes only and is not drawn to scale. Whilst every attempt has been made to ensure its accuracy measurements are approximate only and should be checked before making any decisions reliant upon them. Copyright Bespokeplans.co.uk 2020 (ID690443)



- Two Double Bedrooms
- Spacious Purpose-Built Flat
- Moments from Wimbledon Town Centre
- Share of Freehold
- No Onward Chain
- Bright and Airy
- Separate Kitchen
- Ideal Investment or First Time Purchase
- EPC Rating C



For Free Mortgage Quote and Best Mortgage Rates, call an Ellisons Mortgage Advisor on 020 8944 9494



Although these particulars are believed to be correct, their accuracy is not guaranteed and they do not form part of any contract.

Celebrating 30 years
of successful Sales and
Lettings in Merton

